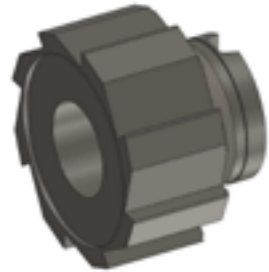


SISTEMA TSA TESTINE INTEGRALI SERIE 9000

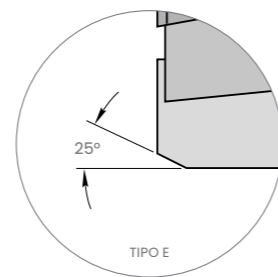
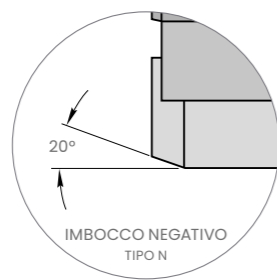
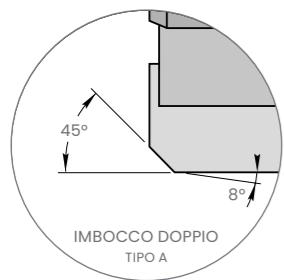
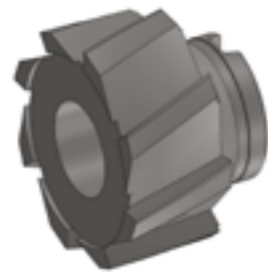


ANGOLI D'IMBOCCO PER TESTINE SERIE TSA 9000

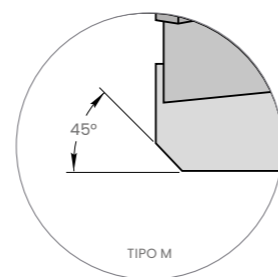
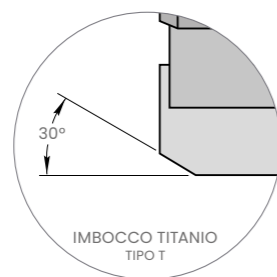
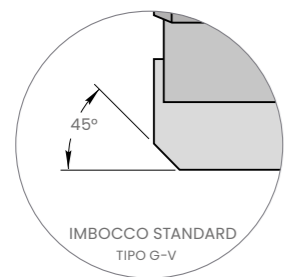
serie 9400
Testine taglienti diritti



serie 9700-9600
Testine elica sinistra/destra



L'imbocco "E" è caratterizzato da una geometria ad alto avanzamento idonea al taglio continuo, ma sconsigliata per il taglio interrotto.



L'imbocco "M" è caratterizzato da una geometria ad alto avanzamento e stabilità incrementata utilizzabile su tagli leggermente interrotti e alesature extra lunghe.

